

# DOMUSLIFT®

Your personal lift



designed and made in Milan





# Free from stairs

DomusLift is the IGV Group outstanding and successful homelift, ideal for vertical transport requirements and for overcoming architectural barriers in both public and private buildings. It is the ideal solution for elderly persons and those with impaired mobility who gain independence and freedom from stairs.

The automatic sliding doors, available on request as an option instead of the standard panel landing door, offer a user-friendly use just like any traditional lift. The wide choice of accessories and finishes, together with S and XS versions, conceived for small spaces, and XL, designed for wide cars, makes DomusLift ideal for any requirements.

DomusLift perfectly fits any new or existing environment, while adding value to it.

10 good reasons for choosing DomusLift:

- Overcomes architectural barriers
- Compact, quiet and easy to install
- Power consumption like any household electrical appliance
- Connects to any electrical 230V outlet
- More than 50 models, for indoor and outdoor
- Standard panoramic glass door
- Reduced maintenance costs
- 3-year warranty
- Customised product
- Made in Italy







## Elegance and style

The special models MADE WITH SWAROVSKI ELEMENTS, Liberty with Trend mosaic, Light-Touch by Giugiaro Architettura, Leather, Carbon, Chrome, Classic and Art Line, add exclusive style and elegance, while enhancing any environment.

DomusLift is a Made in Italy product, guaranteeing state-of-the art technology by IGV Group.

IGV Group is a company with headquarters in Milan (Italy). The company has had a leading role in the design and manufacturing of lifts and lifting platforms since 1966.







# A user-friendly home

## AS SIMPLE AS THAT

DomusLift quick installation procedure requires minimum builder's work, thanks to the reduced pit and headroom. The installation also needs limited regulatory approval and benefits from reduced maintenance costs and low energy consumption by using the standard household 230V mains supply.

## SAFETY

The car is enclosed on three sides and the infrared barrier on the access side guarantees passengers' safety. The enabling key on the pushbutton panels prevents the use from unauthorised persons. In case of power failure, an automatic controlled device brings the car back to the landing and allows the exit of passengers.

## ACCESSIBILITY

DomusLift offers a choice of extremely functional and customisable solutions with special accessories, such as the powered door opening and landing calls. DomusLift is an affordable solution ideal for those with impaired mobility or special needs.

## VERSATILE

DomusLift is a truly all-around product, designed and manufactured to meet a wide range of needs and tastes. From the garage to the roof, DomusLift travels effortlessly up to seven floors.









# Indoor and outdoor

## ALUMINIUM SHAFT STRUCTURE

The aluminium shaft structure is exceptionally light and robust allowing to place DomusLift anywhere, even outdoor. It guarantees an enhanced usability of spaces without affecting the architectural context.

The structure is supplied as standard, the aluminium structure does not require any surface processing, it does neither deform, nor require any maintenance and it is weather-proof and does not change over the time.





#### MASONRY SHAFT

DomusLift can also be installed within your house in a special masonry or reinforced concrete shaft.

## EXISTING BUILDINGS

Thanks to its versatility and flexibility, DomusLift is suitable also for the most challenging situations and allows the installation in any architectural context, both in new and existing buildings, buildings with historical constraints or featuring very narrow stair flights or reduced spaces.







## Eco-sustainability

IGV Group focuses on energy saving and is fully committed to the safeguard of the natural environment.

DomusLift, the eco lifting platform, features a LED technology for the car lighting and is available in two versions: traction with inverter gearless motor for maximum performance and reduced consumptions, and hydraulic, with 100% biodegradable green oil (upon request).

DomusLift has been awarded the prestigious international certification of **Class A** energy efficiency by the certification bodies: TÜV SÜD and IMQ.



# The two sides of Design



## Aluminium

Interior spaces with distinctive features for the Aluminium car model and even cleaner aesthetics. Aluminium profiles frame the interchangeable walls to dress the space in an ever-changing way or to remove any visual obstacle, choosing a fully panoramic solution.



# Steel

The Steel car model interprets an essential and elegant aesthetics where the absence of wall profiles offers maximum linearity and visual continuity, while the wide range of finishes, to choose between painted, plastic-coated sheet metal or stainless steel, allows for unlimited creative possibilities.

## XS - Extra-Small

XS, the slimmest DomusLift ever.  
The new and extremely narrow DomusLift model is designed to fit the smallest shafts thanks to its extremely reduced dimensions. Shaft structure dimensions start from 65 x 91 cm.  
Available only with Steel car.







## DomusLift with automatic doors

The DomusLift range grows thanks to the chances offered by the European Machinery Directive 2006/42/EC. DomusLift is also available with 2-, 3- or 4-panel sliding automatic doors, featuring a reduced sill. The use of automatic doors allows for the elimination of the 'hold-to-run' operation by replacing it with the more practical and user-friendly APB (Automatic Push Button). In case of power failure, automatic return to landing and door opening are operated.





classic

## Classic style

The DomusLift Classic range is designed for those who love the warmth and natural beauty of wood. The wood effect is obtained using a special painting method on the aluminium structure.



## DomusLift Chrome

Brand new geometries with perfectly matching combinations between steel surfaces with polished and satin finishes alternating on the car walls and creating a pattern of blank and solid areas.

Model with V1 full glass door, polished anodised aluminium shaft structure and car pushbutton panel embedded in the handrail.



**DOMUSLIFT®**

MADE WITH  
SWAROVSKI  
ELEMENTS

## Crystal clear

Crystal shine, transparency and elegance are combined with high tech design. A new exclusive DomusLift is born: DomusLift MADE WITH SWAROVSKI ELEMENTS, a triumph of steel, glass and precious reflections.

Designer: arch. Arianna Callocchia



## Leather inner finishes

Leather is synonym of class, elegance and superior quality for interior environments and now is also available in the range of DomusLift car walls, for a new concept of luxury.

Model with gold anodised aluminium shaft structure and door frame, bronze glass, Ivory leather wall and golden SuperFlat landing pushbutton panel.





## Limited Edition

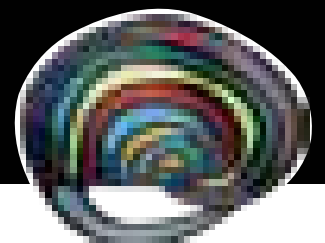
The new DomusLift Art collection featuring Italian art masterpieces... start dreaming!



## Artistic homelift

The Art Line is a highly artistic range. The classic stainless steel car becomes a décor component and perfectly fits any environment. It's an all-new trend compared to traditional lifts.

# ART Line



Model with 2AT window automatic doors, natural anodised aluminium finish for shaft structure, door frame and panels, 'Ramoc' car wall and 'Arcobaleno' floor.



light  
touch

by GIUGIARO  
a trend group

## High-tech design

The DomusLift elegance is further enriched with Giugiaro Architettura innovative lighting system, offering new in-car environments and atmospheres and the subtle sophistication of the touch screen control panel.

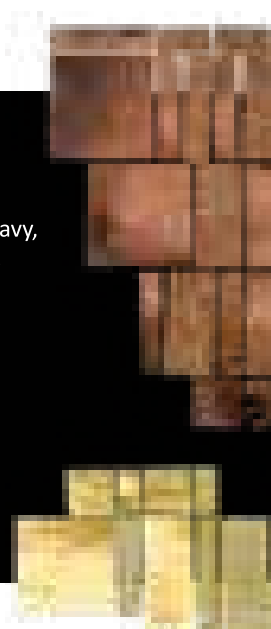


## Liberty appeal

The unique Liberty mosaic made with handcrafted glass shapes lighting effects by alternating smooth and wavy, chromed and iridescent tiles, which enhance and beautify DomusLift surfaces.

by  trend  
trend-group.com

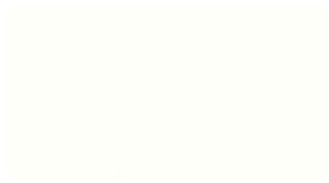
Model with panel panoramic door, RAL 9010 painting for shaft structure, door frame and car profiles, bronze glass, car wall and floor with Liberty Amber mosaic.



# Car walls and finishes

## COATED CHIPBOARD

Only for car inner walls | For Aluminium cars only



W10410 - STANDARD



U11509 - STANDARD



U16002 - STANDARD



F70004 - STANDARD



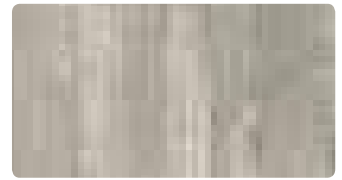
F76023 - Aluminium effect



R27024 - Wood effect



R20031 - Wood effect



R48010 - Concrete effect

## SKINPLATE

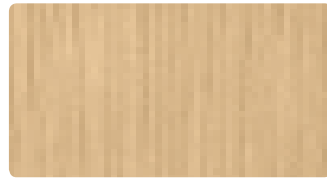
For car inner walls, shaft structure cladding and finishes of sliding automatic doors



DL81E - Wood effect



A90GTA



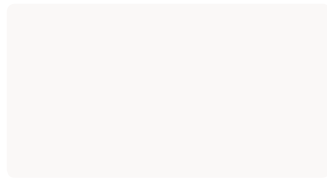
DL86 - Wood effect



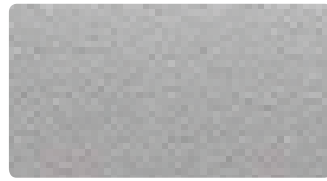
M12



R8SME



A32PP - Polished effect



F2SMA



F42PPS  
Brushed stainless steel effect



F12PPS  
Polished stainless steel effect

## STAINLESS STEEL

For car inner walls, shaft structure cladding and finishes of sliding automatic doors



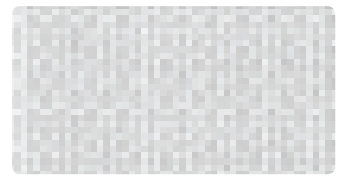
Mirror 128 - Polished effect



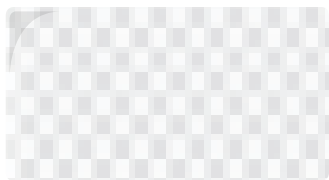
Satin 127



Leather 132 - Polished effect



Linen 145



Chequered 131 - Polished effect



Gold 138 - Polished effect



Satin black

# Car walls and finishes

## PLASTIC LAMINATE

For car inner walls, shaft structure cladding and finishes of sliding automatic doors | For Aluminium cars only



810 - Polished effect



475 - Polished effect



1901



1678 - Wood effect



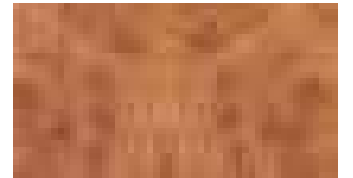
1379 - Wood effect



358 - Wood effect



658 - Wood effect



1306 - Wood effect

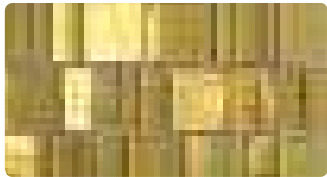


421 - Polished effect

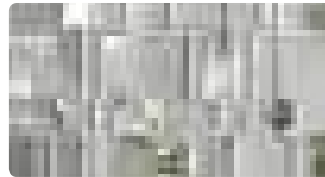
## LIBERTY MOSAIC - For car inner walls | For Aluminium cars only



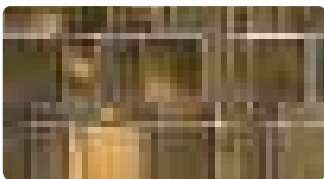
Amber



Topaz



Diamond

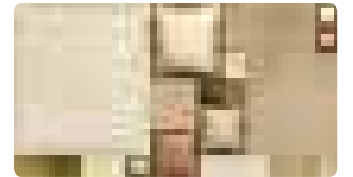


Bronzite



Pearl

## LEATHER - For Aluminium cars only



Ivory



Silver

## GLASS - For car inner walls, shaft structure cladding and window doors



Transparent neuter



Milk white



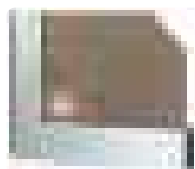
Smoked



Smoked mirror



Bronze



Stopsol



Mirror

Other glass colours or decorative films available upon request.

# Car profiles, shaft structure\*, door and accessories

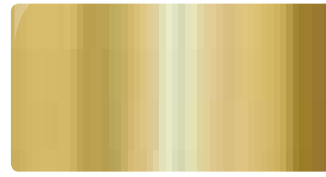
## ANODISED ALUMINIUM



Natural aluminium - STANDARD

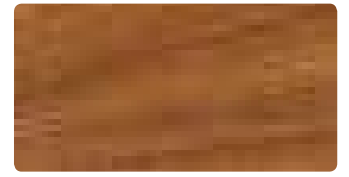


Polished



Gold

## WOOD EFFECT PAINTING



Cherry\*\*

## RAL PAINTING - Various colours available upon request



7001



9010



9006



9005



5023



5011



6010



3003

\* For Aluminium cars only  
 \*\* Only available for aluminium car inner profiles, shaft structure and door

# Car floor

## LINOLEUM - STANDARD



Marmoleum 3861 Arabian pearl

## PVC

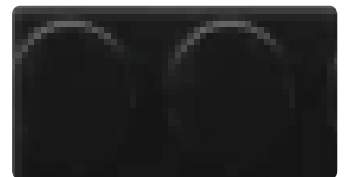


Eternal 12802 Elegant oak

## RUBBER



Smooth grey rubber



Black rubber with dots



Marmoleum 3866 Eternity



Eternal 13122 Grey painted wood



Grey rubber with dots

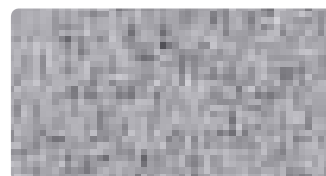
## GRANIT



607 Polar Ice



656 Black Star



2402 Dove Tail



451 White Copper



655 White Star

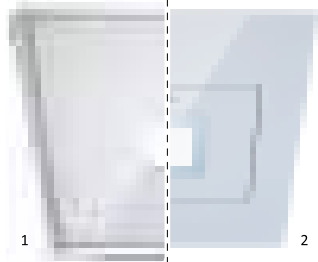


Venus Grey

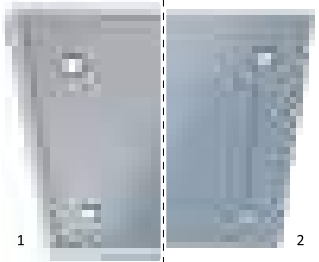


# Car lightings

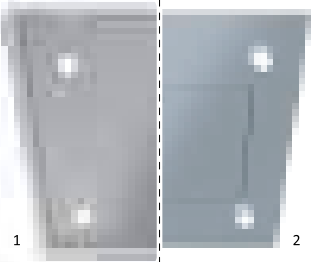
## LED LAMPS



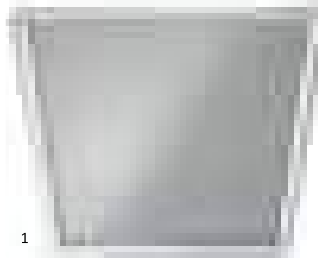
Lighting with A32PP ceiling  
STANDARD



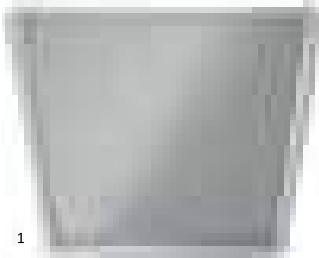
Recessed spotlights



Pop-up (Protruding spotlights)



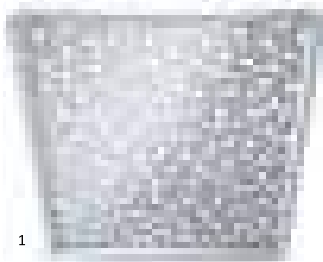
Embedded in car profiles



Galaxy (Recessed micro spotlights)

- 1 Type for Aluminium car
- 2 Type for Steel car

## FLUORESCENT LAMPS



Firmament

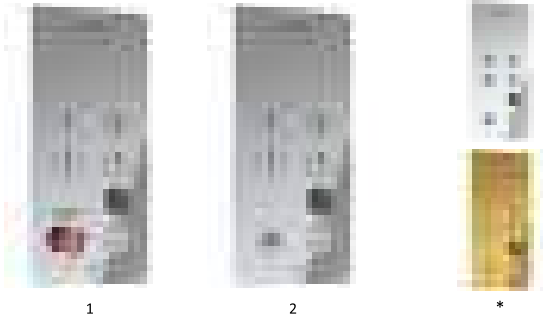


Floral

# Car pushbutton panels

## WALL MOUNTED

### Satin stainless steel plate - STANDARD



width 150 mm  
height 340+570 mm  
depth 1.5 mm

Satin stainless steel pushbutton panel supplied as standard.

\* Also available polished stainless steel or golden stainless steel.

### Satin stainless steel SuperFlat



width 201 mm  
height 454+634 mm  
depth 23 mm

It can be only coupled with SuperFlat landing pushbutton panel.

Chromed or golden upper and lower plastic caps painted in matching finishes.

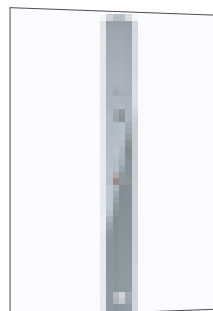
\* Also available polished stainless steel or golden stainless steel.

### Satin stainless steel full-height module | For Aluminium cars only

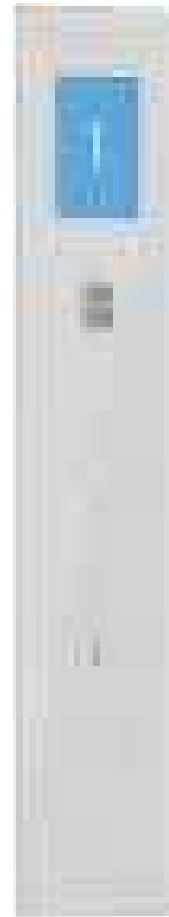


width 202 mm  
height 1980 mm  
depth 27 mm

\* Also available polished stainless steel or golden stainless steel.



### Glass touchscreen with 7" TFT display

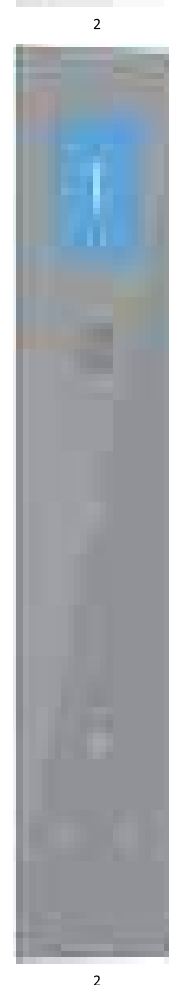


width 185 mm  
height 1008 mm  
depth 8 mm

Glass available in:  
- RAL 9003 white  
- RAL 9005 black  
- RAL 9006 grey

Available with magnetic enabling key.

It can only be combined with glass landing pushbutton panel.



2

- 1 Model for systems without car doors and with hold-to-run control.
- 2 Model for systems with car doors and automatic operation.

## EMBEDDED IN THE HANDRAIL

Natural anodised aluminium flat handrail | For Aluminium cars only



1



2



\*

length 640÷1050 mm  
height 168 mm  
depth 70 mm

Side plastic caps painted in matching colours.

\* Also available polished anodised aluminium or golden anodised aluminium, with RAL painting or polyester painting.

## Landing pushbutton panels

Satin stainless steel plate - STANDARD



1

2

\*

width 80/90 mm  
height 260÷320 mm  
depth 1.2 mm

Only for XS model:

width 60 mm  
height 275 mm  
depth 1.2 mm

\* Also available polished stainless steel or golden stainless steel.

Satin stainless steel SuperFlat



1

2

\*

width 101 mm  
height 230÷430 mm  
depth 23 mm

It can be only coupled with SuperFlat landing pushbutton panel.

Chromed or golden upper and lower plastic caps painted in matching finishes.

\* Also available polished stainless steel or golden stainless steel.

Glass touchscreen



2

2

2

width 110 mm  
height 308 mm  
depth 8 mm

Glass available in:

- RAL 9003 white
- RAL 9005 black
- RAL 9006 grey

Available with magnetic enabling key.

It can only be combined with glass car pushbutton panel.

## Display



ICARO (70 x 74 mm)

LCD display available with blue or black background and chromed or golden frame, or frameless\* for flush mount (48 x 53 mm).

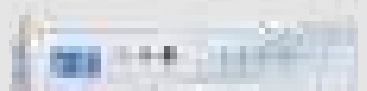
For landing pushbutton panels; for plate, SuperFlat and full-height car pushbutton panels.



\*



\*\*



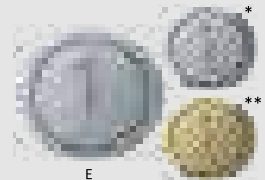
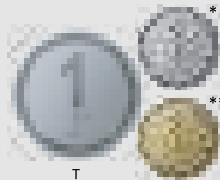
TRICOLOR (150 x 83 mm)

LCD display available with blue or black background and chromed or golden frame, or frameless\*\* for flush mount (120 x 55 mm).

For SuperFlat, full height module and pushbutton panel embedded in the aluminium flat handrail.



## Pushbuttons



VENUS (∅ 29,6 mm)

Pushbutton available with round bezel (T) or, alternatively, with oval bezel (E). Pushbutton with matt stainless steel/ gold finish, matching the selected pushbutton panel.

Bezel with satin stainless steel finish, polished finish\* and polished gold finish\*\*, always matching the selected pushbutton panel finish. The pushbutton features Braille code and blue backlighting.

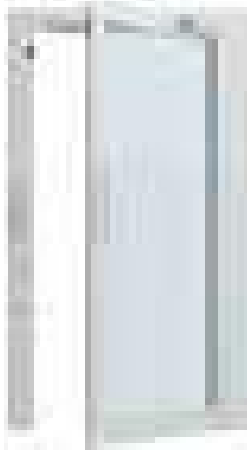


MAXI (55 x 55 mm)

Available for module, pushbutton panels embedded in the handrail and standard landing pushbutton panels.

# Landing and car doors

## SWING LANDING DOORS

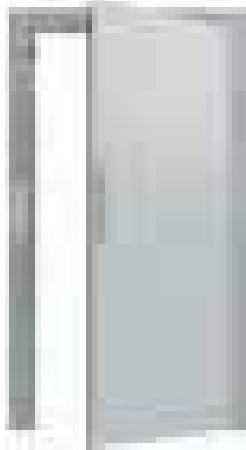


### **B-BT** - STANDARD PANORAMIC ALUMINIUM

Natural anodised aluminium door with ample glass or coated chipboard window. Standard door closer.

#### **FINISHES**

- Golden, polished or natural anodised aluminium
- Painting (RAL, wood effect and polyester)



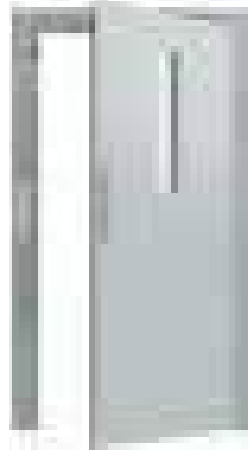
### **C** BLIND IRON

Primed metal door RAL 7001. Retractable door closer.

**Fire-rated doors:**  
EI 120, EI 60, DIN

#### **FINISHES**

- RAL painting



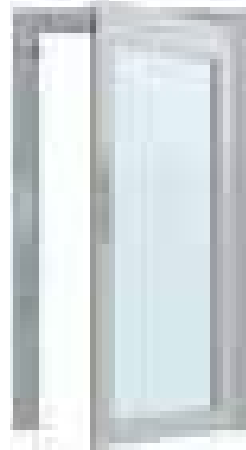
### **D** WINDOW IRON

Primed metal door RAL 7001 and glass window. Retractable door closer.

**Fire-rated doors:**  
BELGIUM, BS476-UK, EI 120, EW 60

#### **FINISHES**

- RAL painting

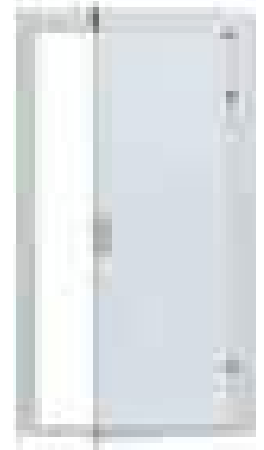


### **E** PANORAMIC IRON

Primed metal door RAL 7001 and ample glass window. Retractable door closer.

#### **FINISHES**

- RAL painting

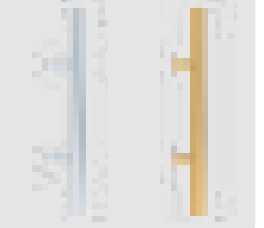


### **V1** PANORAMIC TOTAL GLASS

Transparent glass door with (mirror or satin) stainless steel hinges, handle and frame. Safety buffer embedded in the crossbeams.

#### **DOOR HANDLE**

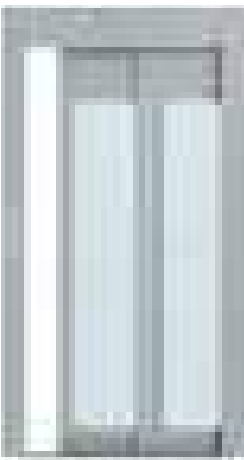
Natural anodised stainless steel handrail. Also available in golden anodised stainless steel. Only for panel landing doors (B-BT, C, D and E type).



## AUTOMATIC SLIDING LANDING AND CAR DOORS

Available with blind or window panels. Primed metal frame RAL 7001.

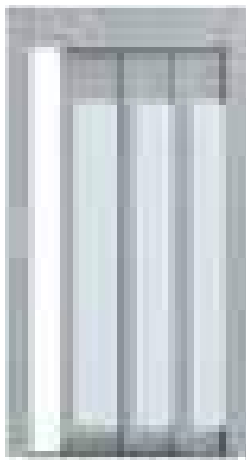
Available finishes: RAL painting and plastic coated sheet steel, stainless steel, plastic coated or adhesive vinyl.



### **2AT**

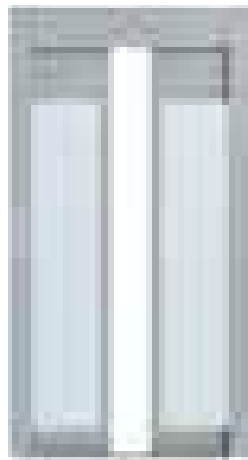
2 framed glass telescopic panels with side opening.

**Fire-rated doors:**  
EI 60 GOST 30247.3  
E120 - EW30  
EI120



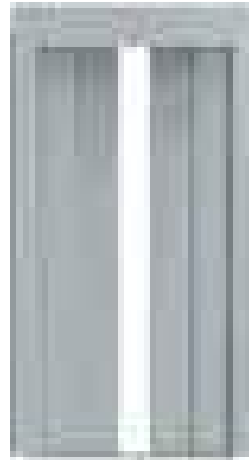
### **3AT**

3 framed glass telescopic panels with side opening.



### **2AO**

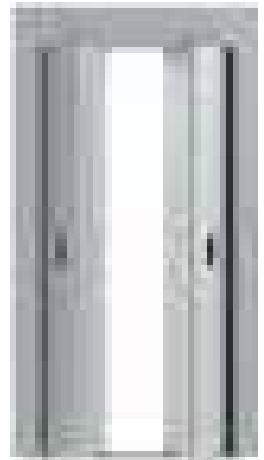
2 framed glass telescopic panels with centre opening.



### **4AO**

4 blind telescopic panels with centre opening.

## CAR FOLDING DOORS



With manual or automatic opening. Available in aluminium (natural anodised or RAL painted) or satin stainless steel. It can be matched only with swing landing doors.