

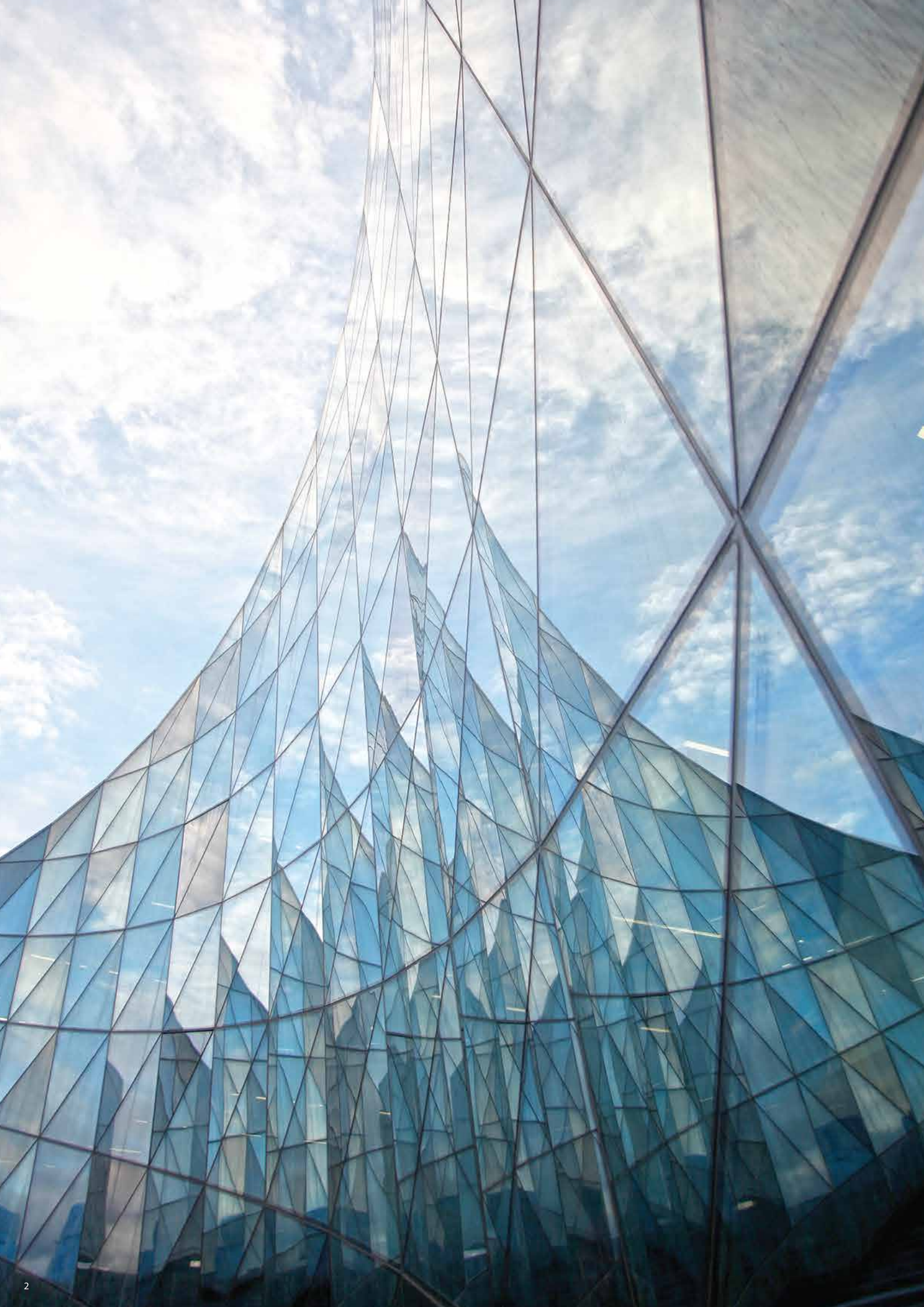


Orona

Orona 3G

Aesthetic solutions





Orona 3G

Aesthetic solutions

ORONA 3G DOMO SERIES

Reference Packs

DR10	5
DR11	6
DR12	7
DR13	8
DR14	9
DR15	10
DR16	11

Selection Packs

DS10	12
DS11	13
DS12	14
DS13	15
DS14	16

ORONA 3G PUBLIC SERIES

Reference Packs

PR10	21
PR11	22
PR12	23
PR13	24
PR14	25

Selection Packs

PS10	26
PS11	27
PS12	28
PS13	29
PS14	30
PS15	31
PS16	32
PS17	33
PS18	34

Orona 3G Plus	38
---------------------	----

Orona 3G

Domo PACKS

Reference Packs



DR10



DR11



DR12



DR13



DR14



DR15



DR16

Selection Packs



DS10



DS11



DS12



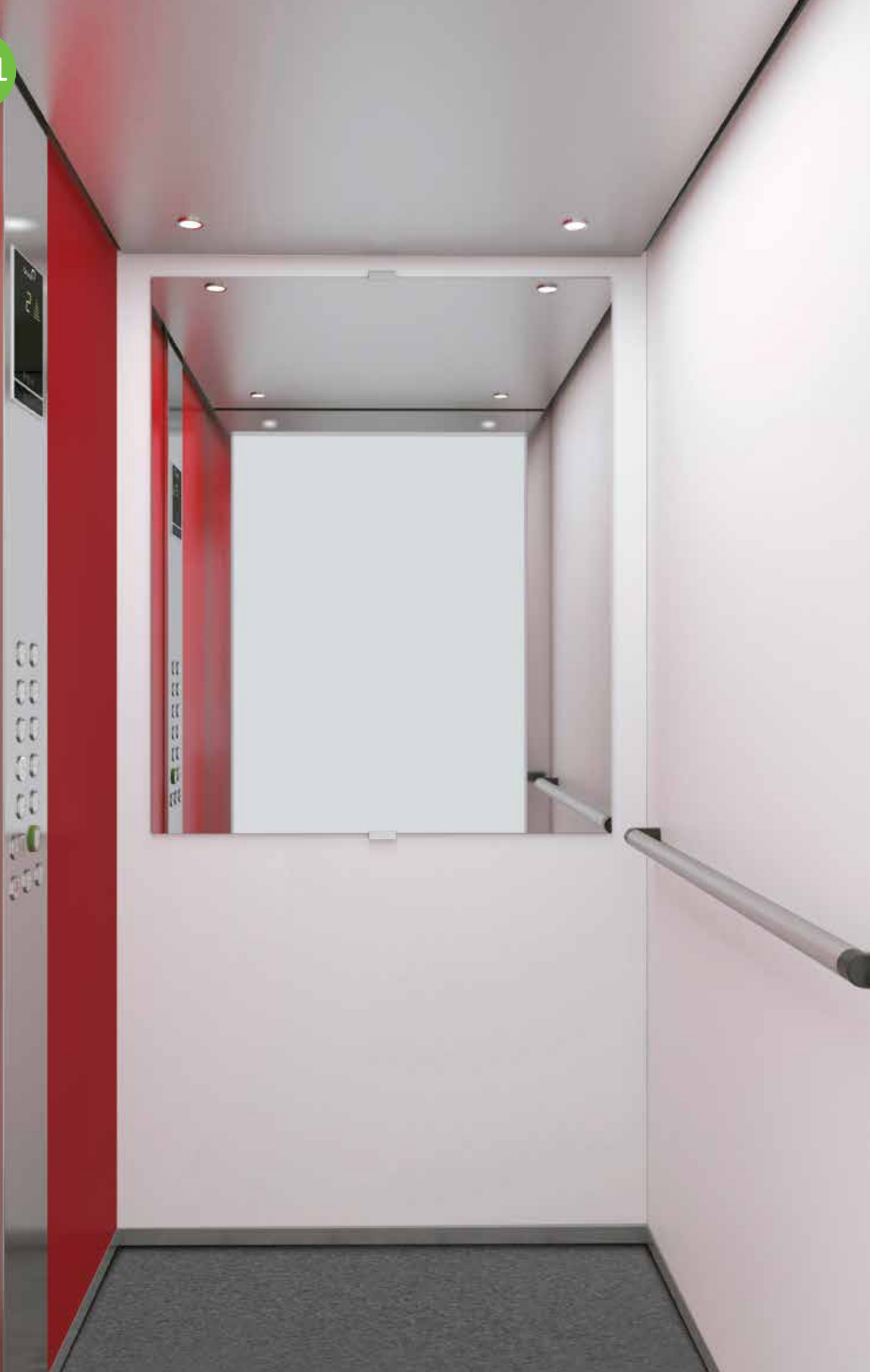
DS13



DS14



DR11





DR13









DS10





DS12





DS14



Orona 3G Domo Packs

CAR OPERATING PANEL



LANDING INDICATOR



7 segment



Dot-matrix



TFT

LANDING PUSH BUTTONS



Push buttons to suit the lifts control type (1 or 2 push buttons)



Key switch push button (standard or eurocylinder)



Surface mounted push button



1



REFERENCE PACKS

SELECTION PACKS

DR10 DR11 DR12 DR13 DR14 DR15 DR16 DS10 DS11 DS12 DS13 DS14

CEILINGINGS AND LIGHTING

MODEL	LED	UP19	•		•	•	•	•	•	•	•	•	•	•
	LED Spotlights	UP37	•	•	•	•	•	•	•	•	•	•	•	•
	LED panel (200 x 200 mm)	UP41								•	•	•	•	•
	LED panel (600x600 mm)	UP67		•								•	•	•
		UP73								•				
CEILING MATERIAL	ST01 St St Base		•	•	•	•	•	•	•	•	•	•	•	•
	ST02 St St Plus		•	•	•	•	•	•	•	•	•	•	•	•
OTHERS	Automatic lighting switch-off		•	•	•	•	•	•	•	•	•	•	•	•
	Emergency hatch		•	•	•	•	•	•	•	•	•	•	•	•
	Fan		•	•	•	•	•	•	•	•	•	•	•	•

CAR WALLS

PANELS	Neocompact Colour	NC02 Red Autumn		•P						•F				
		NC03 White Snow	•	•F/L	•F/L	•F/L	•P	•L/P					•L/P	
		NC25 Warm Green			•P									
	Neocompact Wood	NC15 Oak Tree					•F/L							
		NC21 Oak White										•		
		NC22 Oak Grey				•P								
	Neocompact Texture	NC16 Linen Pure									•			
		NC17 Grey Storm							•					
		NC18 Night Garden						•F					•F	
		NC24 Tissue								•L/P				
	Panel Stainless	ST01 St St Base												•
		ST02 St St Plus												•
	Others	Without cladding (for local fit out)	•	•	•	•	•	•	•	•	•	•	•	•
		Tip-up seat	•	•	•	•	•	•	•	•	•	•	•	•
		2 Entrances or 'Through car' for 180, 'Front/Adjacent' for 90&270	•	•	•	•	•	•	•	•	•	•	•	•

CAR OPERATING PANELS AND INDICATORS

CAR INDICATOR	7 Segment	•	•	•	•	•	•	•	•	•	•	•	•	•
	Dot-matrix									•	•	•	•	•
	Car direction arrows	•	•	•	•	•	•	•	•	•	•	•	•	•
	Overload indicator (buzzer & light)	•	•	•	•	•	•	•	•	•	•	•	•	•
	Direction arrows on entrance return	•	•	•	•	•	•	•	•	•	•	•	•	•
	Car gong	•	•	•	•	•	•	•	•	•	•	•	•	•
	Voice synthesizer	•	•	•	•	•	•	•	•	•	•	•	•	•
CAR OPERATING PANEL MATERIAL	ST01 St St Base	•	•	•	•	•	•	•	•	•	•	•	•	•
	ST02 St St Plus	•	•	•	•	•	•	•	•	•	•	•	•	•
CAR PUSH BUTTONS	Door close push button	•	•	•	•	•	•	•	•	•	•	•	•	•
	Braille push button	•	•	•	•	•	•	•	•	•	•	•	•	•
	Key switch push button (Standard or eurocylinder)	•	•	•	•	•	•	•	•	•	•	•	•	•
	External call cancelling	•	•	•	•	•	•	•	•	•	•	•	•	•
	Coded call	•	•	•	•	•	•	•	•	•	•	•	•	•
LANDING INDICATOR	7 Segment	•	•	•	•	•	•	•	•	•	•	•	•	•
	Dot-matrix									•	•	•	•	•
	Next departure indicator	•	•	•	•	•	•	•	•	•	•	•	•	•
LANDING PUSH BUTTONS	Key switch push button (Standard or eurocylinder)	•	•	•	•	•	•	•	•	•	•	•	•	•
	Surface mounted push button	•	•	•	•	•	•	•	•	•	•	•	•	•
CAR OPERATING PANEL	Horizontal car operating panel	•	•	•	•	•	•	•	•	•	•	•	•	

MIRRORS

MIRRORS	MH (Mirror 1/2)	•F	•F	•F	•F	•F	•F	•F	•F	•F	•F	•F	•F	•F
	MT (Mirror 3/4 narrow)									•F	•F	•F	•F	•F
	Rear-view mirror (EN 81-70)	•	•	•	•	•	•	•	•	•	•	•	•	•
FINISH	O1 Clear	•	•	•	•	•	•	•	•	•	•	•	•	•

HANDRAILS

HANDRAILS	HR01 (Aluminium tube)	•L	•L	•L	•L	•L	•L	•L	•L	•L	•L	•L	•L	•L
	HR02 (Aluminium tube)									•F/L	•F/L	•F/L	•F/L	•F/L
	HR04 (Stainless steel tube)									•F/L	•F/L	•F/L	•F/L	•F/L

FINISHES

SKIRTINGS	SK01 Anodized Aluminium (St St finish)	•	•	•	•	•	•	•	•	•	•	•	•	•
DOOR MATERIALS (car and landing)	ST01 St St Base	•	•	•	•	•	•	•	•	•	•	•	•	•
	ST02 St St Plus	•	•	•	•	•	•	•	•	•	•	•	•	•
	Primed sheet (landing door)	•	•	•	•	•	•	•	•	•	•	•	•	•
DOOR PANEL TYPE	Standard panel (not big vision)	•	•	•	•	•	•	•	•	•	•	•	•	•

FLOORS

SC-PVC HIGH	SC04 Grey Storm			•	•	•	•	•	•	•	•	•	•	•
	SC05 Grey Silver	•	•											
OTHERS	Prepared for granite	•	•	•	•	•	•	•	•	•	•	•	•	•
	Prepared for PVC	•	•	•	•	•	•	•	•	•	•	•	•	•

Orona 3G

Public PACKS

Reference Packs



PR10



PR11



PR12



PR13



PR14

Selection Packs



PS10



PS11



PS12



PS13



PS14



PS15



PS16



PS17



PS18





























Orona 3G Public Packs

CAR OPERATING PANEL



LANDING INDICATOR



7 segment



Dot-matrix



TFT

LANDING PUSH BUTTONS



Push buttons to suit the lifts control type (1 or 2 push buttons)



Key switch push button (standard or eurocylinder)



Surface mounted push button

REFERENCE
PACKS

SELECTION
PACKS

PR10 PR11 PR12 PR13 PR14 PS10 PS11 PS12 PS13 PS14 PS15 PS16 PS17 PS18

CEILING LIGHTING

MODEL	LED Spotlights	UP37	○	○	●	○	●	○	○	○	○	○	○	○	○	○	○	○
	LED panel (200x200 mm)	UP41		●		●												
		UP43							●		●							
	LED panel (600x600 mm)	UP47												●				
		UP53																●
		UP67	●		○		○							●			●	
UP73										●								
LED panel (complete, consult availability of dimensions)	UP71						●		●									
CEILING MATERIAL	ST01 St St Base	●	●	●	●	●	●	○	○	○	○	○	○	○	○	○	○	
	ST02 St St Plus	○	○	○	○	○	○	●	●	●	●	●	●	●	●	●	●	
OTHERS	Automatic lighting switch-off	●	●	●	●	●	●	●	●	●	●	●	●	●	●	●	●	
	Emergency hatch	○	○	○	○	○	○	○	○	○	○	○	○	○	○	○	○	
	Fan	○	○	○	○	○	○	○	○	○	○	○	○	○	○	○	○	

CAR WALLS

PANELS	Neocompact Colour	NC02 Red Autumn							●P		●P							
		NC03 White Snow									●P							
		NC05 Blue Berry												●P				
		NC25 Warm Green				●P												
	Neocompact Wood	NC12 Wood Sinatra							●F/L									
		NC15 Oak Tree			●													
		NC21 Oak White								●								
		NC22 Oak Grey	●									●F/L						
	Neocompact Texture	NC16 Linen Pure							●					●F				
		NC18 Night Garden																
		NC23 Light Linen				●F/L												
		NC24 Tissue		●														
	Panel Stainless	ST01 St St Base					●				●F/L		●P/L	●F/L	●	●		
		ST02 St St Plus					○				○F/L		○P/L	○F/L	○	○		
	Others	Without cladding (for local fit out)	○	○	○	○	○	○	○	○	○	○	○	○	○	○	○	○
		Tip-up seat	○	○	○	○	○	○	○	○	○	○	○	○	○	○	○	○
2 Entrances or 'Through car' for 180, 'Front/Adjacent' for 90&270		○	○	○	○	○	○	○	○	○	○	○	○	○	○	○	○	

CAR OPERATING PANEL AND INDICATORS

CAR INDICATOR	Dot-matrix	●	●	●	●	●											
	TFT						●	●	●	●	●	●	●	●	●	●	●
	Car direction arrows	●	●	●	●	●	●	●	●	●	●	●	●	●	●	●	●
	Overload indicator (buzzer & light)	●	●	●	●	●	●	●	●	●	●	●	●	●	●	●	●
	Direction arrows on entrance return	○	○	○	○	○	○	○	○	○	○	○	○	○	○	○	○
	Car gong	○	○	○	○	○	○	○	○	○	○	○	○	○	○	○	○
	Voice synthesizer	○	○	○	○	○	○	○	○	○	○	○	○	○	○	○	○
	Inductive acoustic coupler	○	○	○	○	○	○	○	○	○	○	○	○	○	○	○	○
CAR OPERATING PANEL MATERIAL	ST01 St St Base	●	●	●	●	●	○	○	○	○	○	○	○	○	○	○	○
	ST02 St St Plus	○	○	○	○	○	●	●	●	●	●	●	●	●	●	●	●
CAR PUSH BUTTONS	Door close push button	○	○	○	○	○	○	○	○	○	○	○	○	○	○	○	○
	Braille push button	●	●	●	●	●	●	●	●	●	●	●	●	●	●	●	●
	Key switch push button (Standard or eurocylinder)	○	○	○	○	○	○	○	○	○	○	○	○	○	○	○	○
	External call cancelling	○	○	○	○	○	○	○	○	○	○	○	○	○	○	○	○
	Coded call	○	○	○	○	○	○	○	○	○	○	○	○	○	○	○	○
LANDING INDICATOR	7 Segment	○	○	○	○	○	○	○	○	○	○	○	○	○	○	○	○
	Dot-matrix	●	●	●	●	●	●	●	●	●	●	●	●	●	●	●	●
	Next departure indicator	○	○	○	○	○	○	○	○	○	○	○	○	○	○	○	○
	Landing gong	○	○	○	○	○	○	○	○	○	○	○	○	○	○	○	○
LANDING PUSH BUTTONS	Key switch push button (Standard or eurocylinder)	○	○	○	○	○	○	○	○	○	○	○	○	○	○	○	○
	Surface mounted push button	○	○	○	○	○	○	○	○	○	○	○	○	○	○	○	○
CAR OPERATING PANEL	Horizontal car operating panel	○	○	○	○	○	○	○	○	○	○	○	○	○	○	○	○

MIRRORS

MIRRORS	MT (Mirror 3/4 narrow)	●F	●F	●F	●F	●F	●F	●F	●F	●F	●F	●F	●F	●F	●F	●F
	Rear-view mirror (EN 81-70)	○	○	○	○	○	○	○	○	○	○	○	○	○	○	○
FINISH	01 Clear	●	●	●	●	●	●	●	●	●	●	●	●	●	●	●

HANDRAILS

	HR04 (Stainless steel tube)	●L	●L	●L	●L	●L	●L	●L	●F/L	●L	●F/L	●F/L	●F/L	●L	●F/L	●L
--	-----------------------------	----	----	----	----	----	----	----	------	----	------	------	------	----	------	----

FINISHES

SKIRTINGS	SK01 Anodized Aluminium (St St finish)	●	●	●	●	●	●	●	●	●	●	●	●	●	●	●
DOOR MATERIALS (car and landing)	ST01 St St Base	●	●	●	●	●	○	○	○	○	○	○	○	○	○	○
	ST02 St St Plus	○	○	○	○	○	●	●	●	●	●	●	●	●	●	●
	Primed sheet (landing door)	○	○	○	○	○	○	○	○	○	○	○	○	○	○	○
DOOR PANEL TYPE	Standard panel (not big vision)	●	●	●	●	●	●	●	●	●	●	●	●	●	●	●

FLOORS

SC-PVC HIGH	SC01 Red Cherry												●			
	SC03 Grey Ice						●	●								
	SC04 Grey Storm		●	●	●	●			●	●	●					●
	SC05 Grey Silver	●												●		
	SC06 Beige Sand														●	
OTHERS	Prepared for granite	○	○	○	○	○	○	○	○	○	○	○	○	○	○	○
	Prepared for PVC	○	○	○	○	○	○	○	○	○	○	○	○	○	○	○

● Standard ○ Optional F Back wall L Side wall opposite car operating panel P Side wall with car operating panel

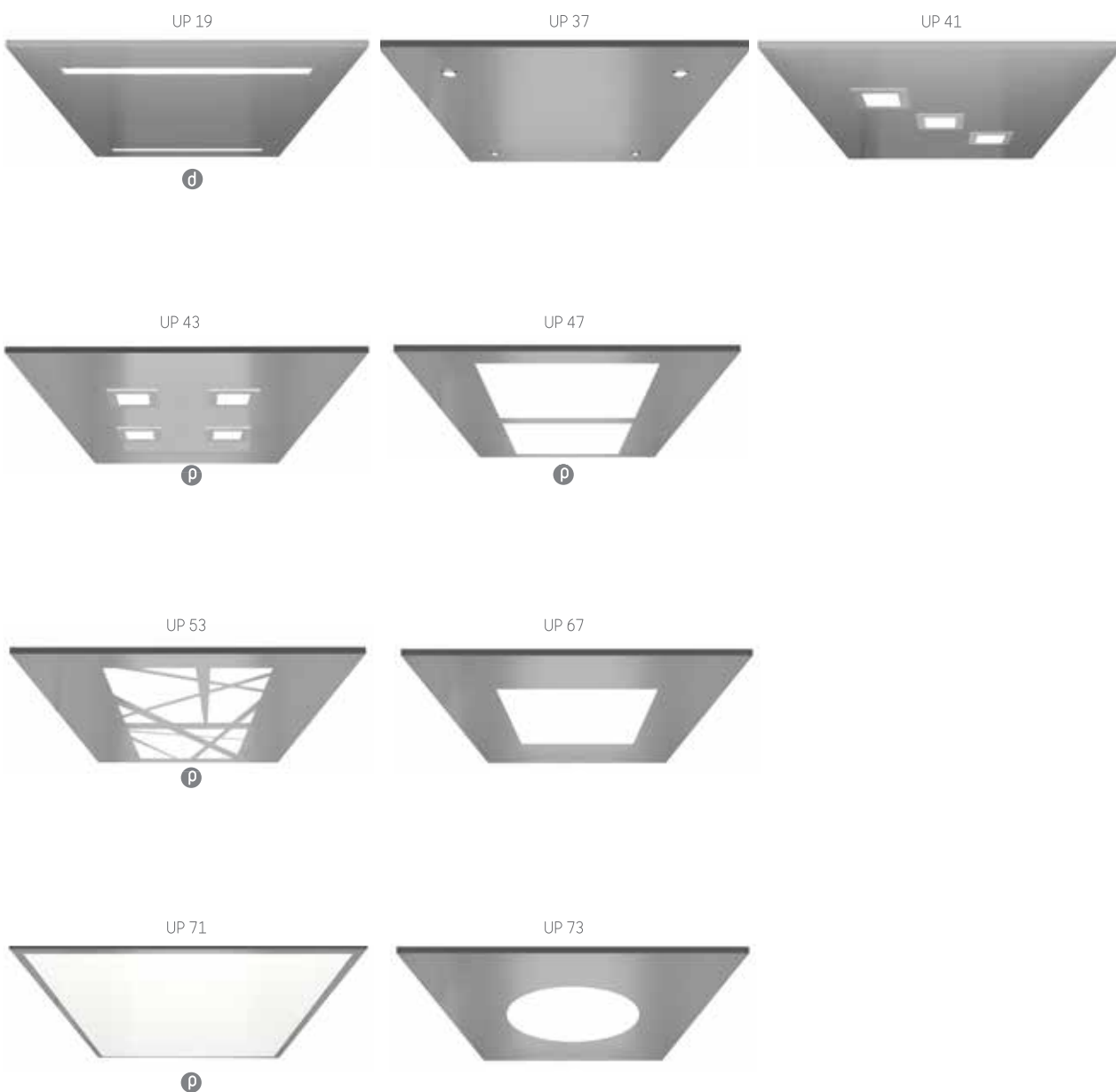


Orona 3G
Plus

Orona 3G Plus

Ceilings and LED lighting - Automatic lighting switch-off included

MODEL*



OTHERS

- Emergency hatch
(UP37- UP41)

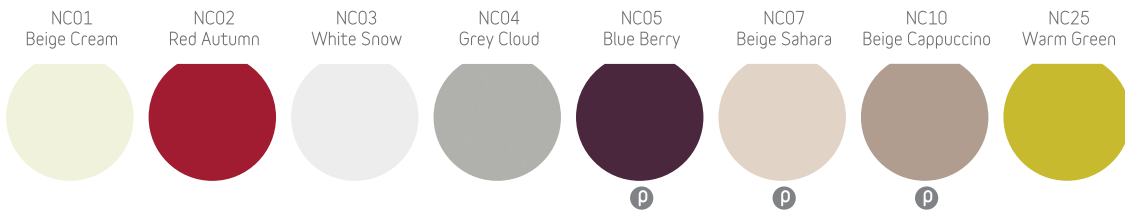
- Fan

* Certain lighting models may not be available, depending on car dimensions.

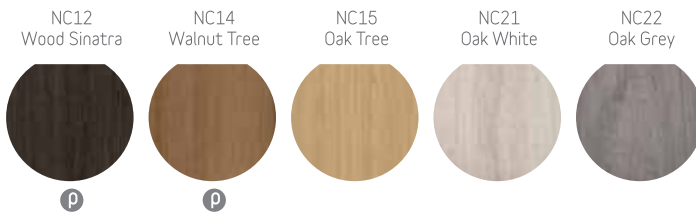
p Only available in Public range **d** Only available in Domo range

Car walls

NEOCOMPACT COLOUR



NEOCOMPACT WOOD



NEOCOMPACT TEXTURE



PANEL STAINLESS



OTHERS

- Without cladding (for local fit out)
- Tip-up seat
- 2 Entrances or 'Through car' for 180, 'Front/Adjacent' for 90&270

Car operating panel

Car indicator



7 segment



d



p

Dot-matrix



d



p

TFT



d



p

Direction arrows on entrance return



OTHERS

- Car direction arrows
- Overload indicator (buzzer & light)
- Car gong
- Voice synthesizer
- Inductive acoustic coupler

OTHERS

- Double car operating panel
- Horizontal car operating panel

Landing indicator

7 segment



d



p

Dot-matrix



d



p

TFT



d



p

Wall landing indicator



d



p

OTHERS

- Next departure indicator
- Landing gong

Car push buttons

Orona Braille circular model



Model with additional contrast



OTHERS

- Door close push button
- Key switch push button (Standard or eurocylinder)
- External call cancelling
- Coded call

Orona 3G Series push buttons are water-resistant (IPX3 under EN 60529) and have fully passed the impact and fire tests defined in the EN 81-71 standard.

For enhanced anti-vandalism resistance needs (Category 1), Orona offers its comprehensive PPSS 03G anti-vandalism solutions, which fully complies with the EN 81-71 standard (push buttons, displays, doors, lighting, ceilings, walls, floors, mirrors, enclosures, etc.).

Landing push buttons

Push buttons to suit the lifts control type (1 or 2 push buttons)



d



p

Key switch push button (standard or eurocylinder)



d

p

Surface mounted push button



d



p

Mirrors

MH (Mirror 1/2)

MT (Mirror 3/4 narrow)

MW (Mirror 3/4 wide) **p**

Rear-view mirror (EN 81-70)

FINISH

01 Clear

02 Smoked

Bumprails

Wood

Stainless steel

PVC

Double bumprail

Skirtings

SK01 Anodized Aluminium (St St finish)

SK02 Lacquered Aluminium

Handrails

HR01 (Aluminium tube)



HR02 (Aluminium tube)



HR03 (Aluminium tube)

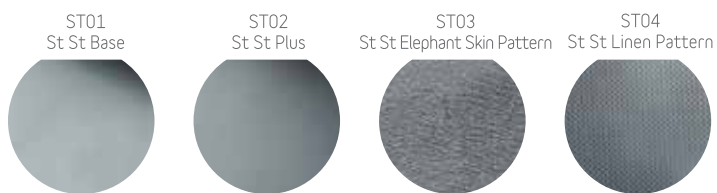


HR04 (Stainless steel tube)



p Only available in Public range **d** Only available in Domo range

Car operating panel material and/or ceiling and/or doors (car and landing)



Floors

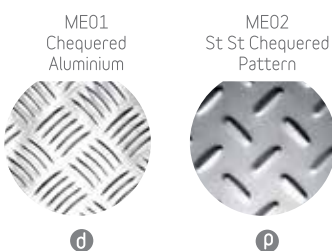
SC-PVC HIGH



SW CERAMICS - Available subject to dimensions



ME-OTHER



OTHERS

- Prepared for granite (23 mm)
- Prepared for PVC (23 mm or 3 mm in restricted pits)



- 1 out of every 10 new lifts in Europe is Orona
- More than 100 countries have Orona products installed
- 250,000 lifts worldwide with Orona technology
- First company in the sector worldwide certified in Eco-design (ISO 14006)

Orona 3G

- Aesthetic solutions
- Technical solutions

GAMALIFT JOINT STOCK COMPANY

Hanoi Head Office:

• No. 18/647 Lac Long Quan Street, Xuan La Ward, Tay Ho District, Hanoi.
Phone: 0243 5578366 | Fax: 0243 5578365

Office in Ho Chi Minh city:

• No. 72, Street No. 2, Him Lam Residence, Tan Hung Ward, District 7, Ho Chi Minh City
Phone: 0283 8311608 | Fax: 0283 8311608

Hotline: 18009406

Email: contact@gamalift.com | www.gamalift.com | www.gamavietnam.com.vn



Pioneering in advanced
HOMELIFT solutions



www.orona-group.com

The specifications in this document are for information purposes only,
and Orona reserves the right to change at any time.